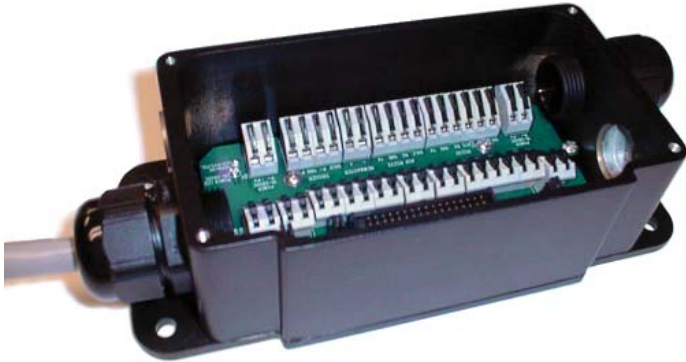


IB-890



Interface Box

The IB-890 interface box is an optional wiring accessory for the MS-890 scanner.

The IB-890 interface box is easy to wire, and makes switching scanners on the line as simple as removing four standard screws. Because the device is so quick to connect and disconnect, factories have greater freedom to easily fit the MS-890 scanner and IB-890 interface box into existing hardware configurations.

The IB-890 interface box can also house the Ethernet Protocol Card, which provides optional Ethernet protocol and communication.

IB-890: Easy Connectivity

- The IB-890 allows several types of external devices to be connected and controlled by the scanner:
 - Light stacks
 - Handled readers
 - Stop-line devices

For more information on this product, visit www.microscan.com.



Shown here connected to the MS-890 Scanner

Wiring Path

A clean path for wiring is accomplished by using four access holes on each side of the box. A clear zone is located between the rows of terminal strips, which allows wiring to be easily routed.

Terminal Strip Connectivity

The IB-890 features a user-friendly spring clip design. Spring clips are quick and very strong, with the ability to accept wire sizes of 14-28 Awg rated for 250 Volts and 13 Amps. The terminal connections provide flexibility as well as reliability.

Quick Scanner Disconnect

The scanner and interface box are connected by four retaining screws which can be easily removed.

Discrete Outputs

The IB-890 allows the user to access three programmable discrete outputs that can switch up to 100 mA of current. Additionally, the user has the option to route the discrete output through an additional plug-gable relay module that provides the capability to switch AC or DC power for up to three amps of current.

IB-890 INTERFACE BOX SPECIFICATIONS AND OPTIONS

PLUGGABLE RELAY MODULE

K1	Pluggable Relay Module
K2	Pluggable Relay Module
K3	Pluggable Relay Module

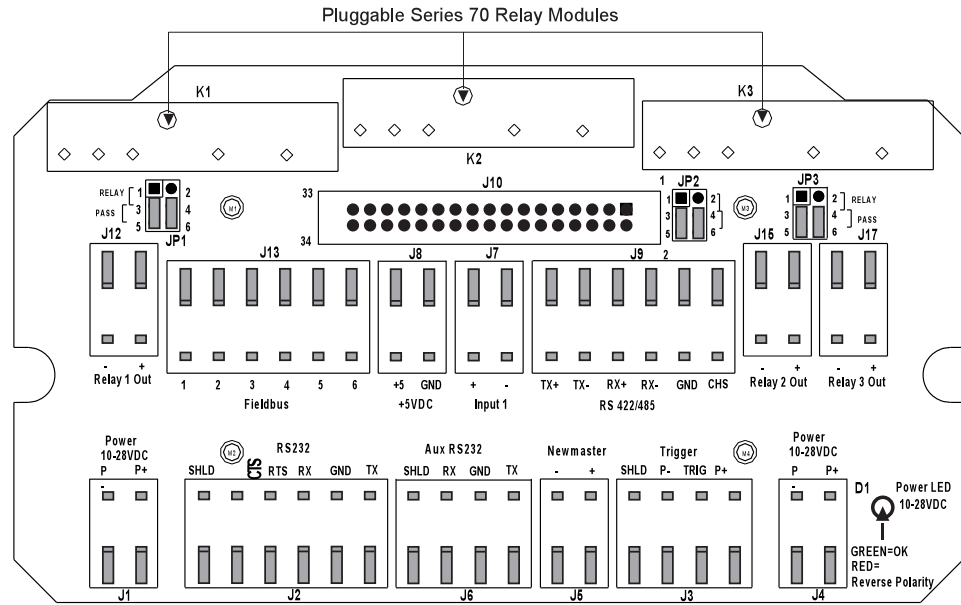
JUMPERS

JP1	Relay 1 Output Jumper
JP2	Relay 2 Output Jumper
JP3	Relay 3 Output Jumper

OUTPUTS

J1	Power 10-28 VDC
J2	RS-232
J3	Trigger
J4	Power 10-28 VDC
J5	New Master
J6	AUX RS-232
J7	Input 1
J8	+ 5 VDC
J9	RS-422/485
J10	Scanner Connector
J11	
J12	Relay 1 Out
J13	Fieldbus
J14	
J15	Relay 2 Out
J16	
J17	Relay Out

Interface Box Inside View



MECHANICAL

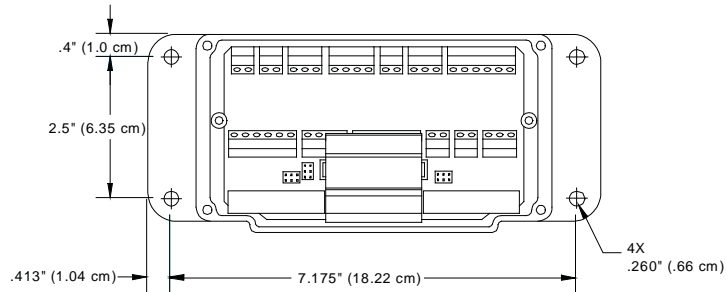
Length: 8.01" (203 mm)
Width: 3.5" (89 mm)
Height: 1.87" (47 mm)
Weight: 1.5 Lb. (680.3 g)

SPRING CLIPS (Type 605)

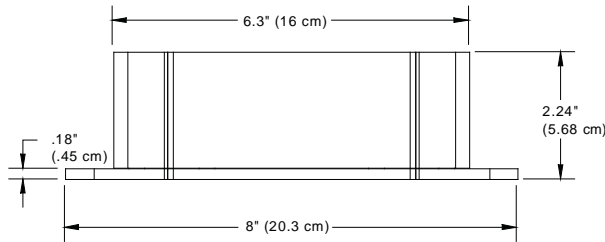
Max. Voltage	250 Volts
Max. Current	13 Amps
Wire Range	14-28 AWG.*
Wire Strip Length	14-28 (.236")
Wire Retention	

*Solid or Stranded

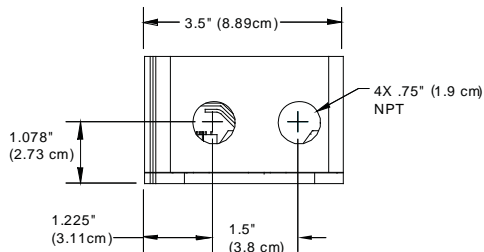
Top



Front



Side



SAFETY CERTIFICATIONS DESIGNED FOR
 FCC, UL/cUL, CE, BSMI

ROHS/WEEE COMPLIANT

ISO CERTIFICATION
 Certified ISO 9001:2008 Quality Management System

©2011 Microscan Systems, Inc. SP027C 01/11

Warranty—One year limited warranty on parts and labor. Free extended 3 year warranty upon online product registration.

MICROSCAN

Microscan Systems Inc.

Tel 425 226 5700 / 800 251 7711
 Fax 425 226 8250

Microscan Europe

Tel 31 172 423360 / Fax 31 172 423366

Microscan Asia Pacific

Tel 65 6846 1214 / Fax 65 6846 4641

www.microscan.com

Product Information: info@microscan.com
 Auto ID Support: helpdesk@microscan.com
 Vision Support: visionsupport@microscan.com
 NERLITE Support: nerlitesupport@microscan.com