

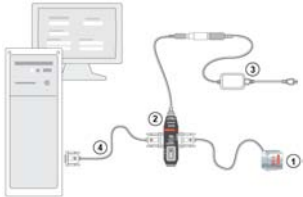
# MS-3 - CONFIGURATION

MICROSCAN



## Stand-Alone (5V)

This is the basic setup for a single MS-3 Laser Scanner.  
**Note:** For a 10-28V Stand-Alone option, see Microscan's Product Pricing Catalog.

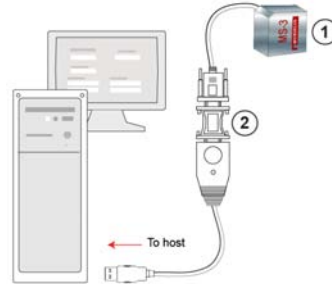


### System Matrix

Product	Part Number	Description
(1) MS-3	FIS-0003-XXXXG	Laser Scanner
(2) IB-3PC	FIS-0001-0030G	Keyboard Wedge/Interface Box
(3) Power Supply	97-000002-01	90-264 VAC, +5VDC
(4) Communication Cable	61-000010-02	9-pin socket to 9-pin socket, 6 ft.

## USB (5V)

This setup allows the scanner to communicate with the host via a USB virtual COM port. The scanner is also powered by the USB connection.

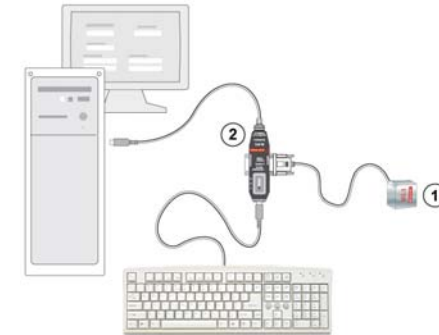


### System Matrix

Product	Part Number	Description
(1) MS-3	FIS-0003-XXXXG	Laser Scanner
(2) USB Conversion Kit	98-000051-01	Converts to USB Standard Connection

## Keyboard Wedge (5V)

This setup allows the scanner to bypass the RS-232 port and send data to the host via the keyboard line.

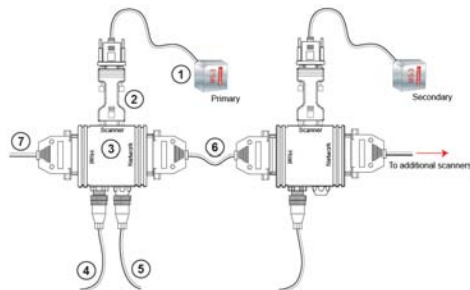


### System Matrix

Product	Part Number	Description
(1) MS-3	FIS-0003-XXXXG	Laser Scanner
(2) IB-3PC	FIS-0001-0030G	Keyboard Wedge/Interface Box

## Daisy Chain (10-28V)

A primary scanner is linked directly to the host computer. Secondary scanners are linked in tandem. Data is sent from each scanner to the host.

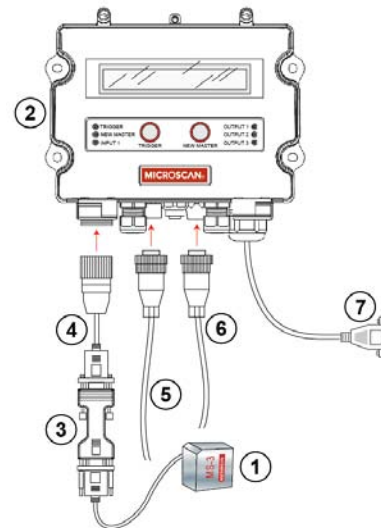


### System Matrix

Product	Part Number	Description
(1) MS-3	FIS-0003-XXXXG	Laser Scanner
(2) IC-332	FIS-0001-0035G	Voltage converter (to 10-28V)
(3) IB-131	99-000018-01	Interface Box
(4) Power Supply	97-100004-15	90-264 VAC, 24VDC, USA/Euro plug
(5) Object Detector	99-000017-01	Photo Sensor, Visible, NPN, Dark On
(6) Daisy Chain Cable	61-100029-03	IB-131 to IB-131, 1 ft. (.3 meters) (One per MS-3 pair)
(7) Communication Cable	61-300026-03	25-pin plug to 9-pin socket, 6 ft.

## Stand-Alone with MS-Connect 210 (10-28V)

This is the basic setup for a single MS-3 and an MS-Connect 210 Connectivity Box.



### System Matrix

Product	Part Number	Description
(1) MS-3	FIS-0003-XXXXG	Laser Scanner
(2) MS-Connect 210	FIS-0210-000XG	Connectivity Box
(3) IC-332	FIS-0001-0035G	Voltage converter (to 10-28V)
(4) Scanner Cable	61-000127-01	MS-3 to MS-Connect 210 cable, 6 ft.
(5) Power Supply	97-100004-15	90-264 VAC, 24VDC, USA/Euro plug
(6) Object Detector	99-000017-02	Photo Sensor, Visible, NPN, Light On
(7) Host Cable	61-000105-01	MS-Connect 210 to host, user-stripped to 9-pin (included)