

HAWKEYE 45T CONFIGURATION GUIDE

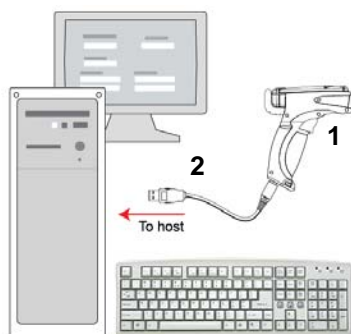


Hardware Required

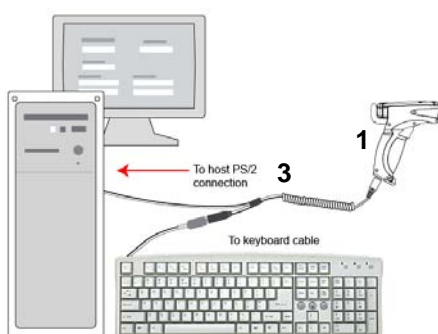
Item	Description	Part Number
1	HawkEye 45T Reader	FIS-HT45-XXXXG
2	USB Cable (included with USB model)	
3	Keyboard Wedge Cable, 6', coiled, PS/2	60-000018-03
4	RS-232 Kit, including 8 ft. coiled cable, Power Supply	98-000074-XX
5	Power Supply (included in RS-232 Kit), 90-264 VAC, +5VDC, 1.5A, includes wall mount	
6	USB Modem Kit	98-000076-10
7	RS-232 Modem Kit	98-000076-07, -08, -09
8	MS-Connect 210 Connectivity Box	FIS-0210-XXXXG
9	Power Supply, 90-264 VAC, 24VDC USA/Euro Plug	97-100004-15
10	Reader Cable, MS-Q to MS-Connect 210, 5 meters, coiled	61-000066-02
11	Host Cable, user-stripped, RS-232, 9-pin	61-000105-01

Configurations

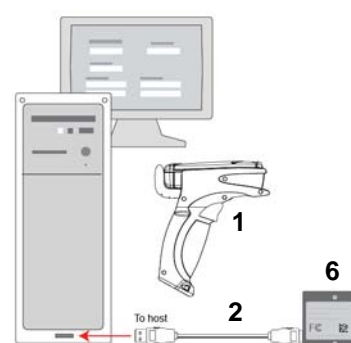
USB



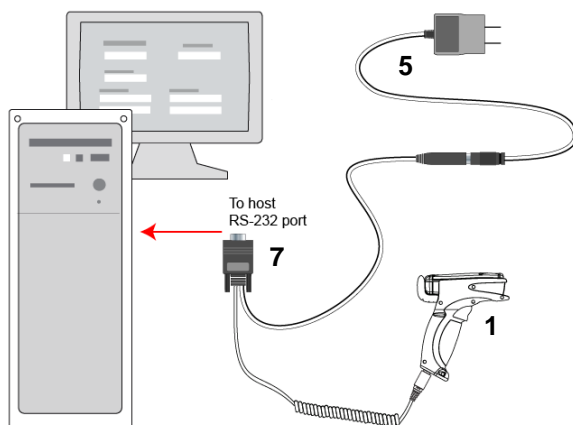
PS/2



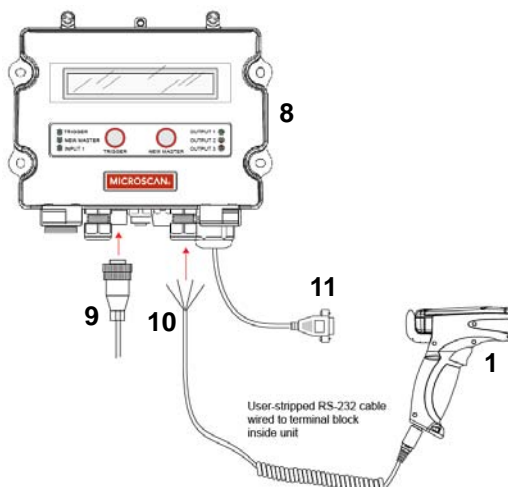
Bluetooth (Wireless)



RS-232



RS-232 with MS-Connect 210



HawkEye 45T Accessories

Battery Charger Kits		
H1 Handle		
2-Bay Battery Charger Kit	98-000075-04	USA Power Supply
2-Bay Battery Charger Kit	98-000075-05	Europe Power Supply
2-Bay Battery Charger Kit	98-000075-06	UK Power Supply
BH1 and BH2 Handles		
Cable Battery Charger Kit	98-000075-07	USA Power Supply
Cable Battery Charger Kit	98-000075-08	Europe Power Supply
Cable Battery Charger Kit	98-000075-09	UK Power Supply
Charging Bay Kit	98-000075-10	USA Power Supply
Charging Bay Kit	98-000075-11	Europe Power Supply
Charging Bay Kit	98-000075-12	UK Power Supply
Charging Bay Kit	98-000076-13	No Power Supply
Bluetooth Modem Kits		
Bluetooth Modem Kit, USA Power Supply	98-000076-11	RS-232
Bluetooth Modem Kit, Europe Power Supply	98-000076-12	RS-232
Bluetooth Modem Kit, UK Power Supply	98-000076-13	RS-232
Bluetooth Modem Kit	98-000076-14	USB
Power Supplies		
Power Supply, USA Plug	20-000335-02	90-264 VAC, +5VDC, 1.5A, includes wall mount
Power Supply, Europe Plug	20-000336-02	90-264 VAC, +5VDC, 1.5A, includes wall mount
Power Supply, UK Plug	20-000337-02	200-400 VAC, +5VDC, 2.4A, includes wall mount
Miscellaneous Accessories		
MS-Connect 210	FIS-0210-0001G	Connectivity Box with Display
MS-Connect 210	FIS-0210-0002G	Connectivity Box
MS-Connect 210	FIS-0210-0003G	Connectivity Box with Display and Ethernet
MS-Connect 210	FIS-0210-0004G	Connectivity Box with Ethernet
Reader Cable	61-000066-02	Reader to MS-Connect 210, 15 ft.
H1 Handle	12-000215-02	H1 Handle, First-Generation, non-ruggedized
H2 Handle	12-000215-06	H2 Handle, Ruggedized Handle with Battery Blank
BH1 Handle	12-000215-07	BH1 Handle, 1950mAH Battery
BH2 Handle	12-000215-08	BH2 Handle, 3900 mAH Battery
Battery Blank	20-000338-02	Battery Blank, H1 Handle
Battery	20-000333-04	Battery, LiON, 1950mAH, H1 Handle
RS-232 Cable	60-000008-02	RS-232 Cable, 8', coiled
USB Cable	60-000009-02	USB Cable, 6', straight
USB Cable	60-000031-01	USB Cable, 12', straight
PS/2 Cable	60-000018-02	PS/2 Cable, 6', coiled
Protective Jacket	20-000925-01	Protective Jacket, H1 Handle only
Documentation		
Microscan Tools CD	37-000001	Software, User's Manuals, Quick Start Guides, Configuration Guides, links to Microscan website

Note: Additional accessories are available in the Microscan Product Pricing Catalog.