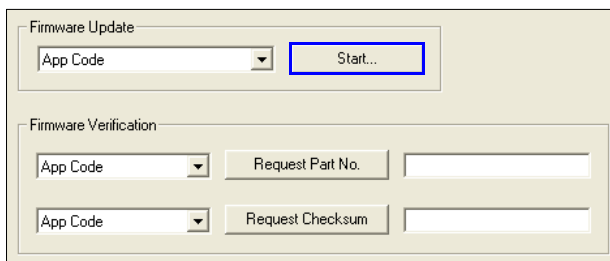




MS-4X Firmware Update Guide

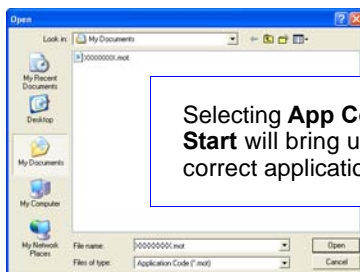
Important: Updating application code will overwrite any other firmware currently on the reader. Be sure that you are downloading the correct firmware for your reader and that the firmware download will not interfere with your application. Contact the Microscan Help Desk at helpdesk@microscan.com for additional assistance with firmware upgrades.

ESP's **Firmware Update** feature is used to download application code to your reader. Application code versions are specific to your reader. Consult with your sales representative before downloading application code. If necessary, firmware will be sent to you in the form of a *.mot file.



To download application code:

1. First, be sure that your reader is connected to the host computer.
2. Apply power to the reader.
3. In the **Firmware Update** dropdown menu, select **App Code** and click **Start**. This will open a dialog that allows you to browse for the application code file.



Selecting **App Code** from the dropdown menu and clicking **Start** will bring up the dialog shown here. When you find the correct application code file, select it and click **Open**.

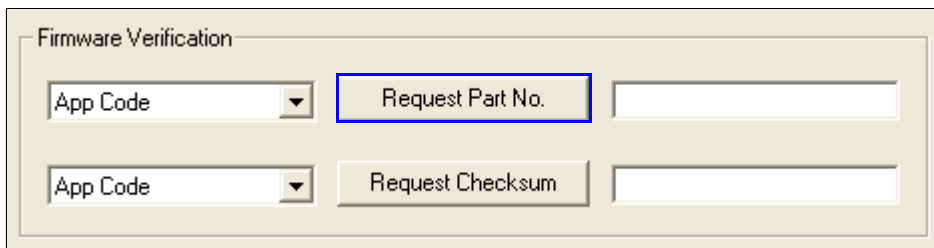
4. Navigate to where the application code file (a *.mot file) is located on your host computer, and select the file to begin the firmware download.
The download process may take several minutes. During the download, the reader will be silent, the LEDs will flash intermittently, and a progress indicator at the bottom of the ESP window will let you know when the download is complete.

Caution: Do not interrupt power or disconnect the host cable while firmware download is in progress.

Firmware Verification

The part number of your reader's application code can be verified using ESP.

1. Click the **Firmware** tab in ESP's **Utilities**.
2. In the **Firmware Verification** section, select **App Code** from the dropdown menu to the left of the **Request Part No.** button.
3. Click the **Request Part No.** button. Your reader's application code part number will appear in the field to the right.



The screenshot shows a 'Firmware Verification' dialog box with a light beige background. It contains two rows of controls. The top row features a dropdown menu labeled 'App Code' with a downward arrow, a button labeled 'Request Part No.' which is highlighted with a blue border, and an empty text input field to its right. The bottom row features another 'App Code' dropdown menu, a button labeled 'Request Checksum', and another empty text input field to its right.