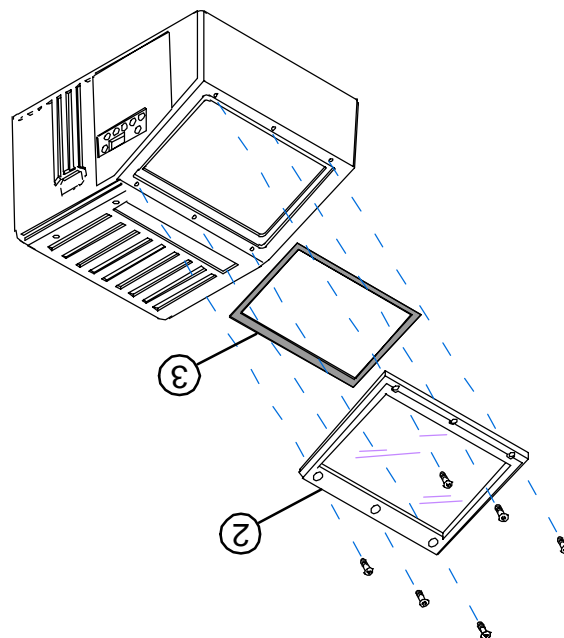


3. Carefully remove the window retainer assembly (2) and the gasket (3) from the unit, making sure that nothing is dropped inside the unit.
4. Place the new gasket (3) in the window recess. The gasket should be positioned so that the larger edge (the one touching the #3 callout leader) is on the lip closer to the Microscan label.
5. Remove protective plastic from both sides of the window retainer assembly.
6. Without touching the window, place the new window retainer assembly (2) onto the unit so that the window sits in the recess and the holes line up with those in the case.
7. Insert the six window retainer screws (1) into the window retainer (2) and screw them lightly into the case.
8. Tighten gradually, from side to side and out to the corners to avoid cracking or warping the window during installation, finishing with .33 Nm (2.9 in-lbs) of torque to the screws.



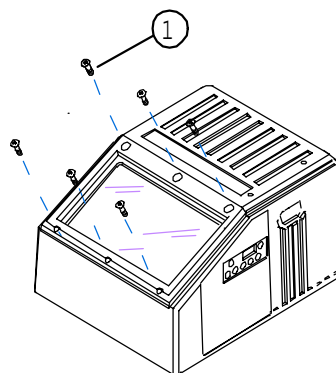
WINDOW REPLACEMENT

MS-890 Scanner

Window Replacement Instructions

Note: The window is affixed to the window retainer assembly and is replaced as a unit. You can use the existing screws or not, but you should always use the new gasket included in the kit.

1. Turn off power (if connected).
2. Place scanner flat on a table as shown below and remove the six window retainer screws (1).



MICROSCAN®

Microscan Corporate Office

Tel 425-226-5700/Fax 425-226-8250

Microscan Europe

Tel 31-172-4233-60/Fax 31-172-4233-66

Microscan Asia Pacific RO

Tel 65-6846-1214/Fax 65-6846-4641

www.microscan.com

Email: info@microscan.com

© 2015 Microscan Systems, Inc.