

Microscan's machine vision systems are a comprehensive line of software and hardware solutions, with total scalability from smart camera systems to PC-based solutions, which accommodate all user levels and applications. AutoVISION™ features an intuitive interface for easy setup and deployment of vision applications, including scalability to Visionscape® for more complex configurations and advanced programming capabilities.

### AutoVISION Software: For Novice Users and Basic to Mid-Range Applications



#### ■ Complete Tool Set

Includes Microscan's X-Mode 1D/2D decoding and fully teachable OCR, along with Locate, Measure, Count and Detect tools. Verification and OCV tools validate quality of printed text such as date/lot codes.

#### ■ Microscan Link

Connects job parameters to industrial control systems or to a PLC system with a simple click.

#### ■ Immediate Feedback

Provides real time feedback and results as a device is being configured or during programming.

#### ■ Scalable to Visionscape

Open jobs with Visionscape Frontrunner for more flexibility.

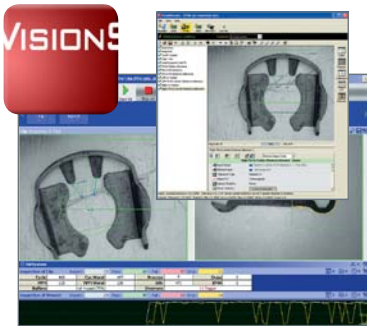
### Available Hardware:

- Vision MINI
- Vision HAWK
- Vision HAWK C-Mount

### Capabilities:

- 1D/2D symbol decoding
- OCR & OCV
- Dynamic part location
- Assembly verification
- Dimensional measurements

### Visionscape Software: For Advanced Users and Complex Applications



#### ■ FrontRunner Interface

"Engineering" GUI provides a visual approach to application development, training, and evaluation using an intuitive tree structure for maximum flexibility.

#### ■ AppRunner Interface

"Monitoring" GUI displays run time images, graphics, and results; same data also available in a web-based smart camera HMI.

#### ■ GigE

Camera interface standard using Gigabit Ethernet communication protocol to allow fast image transfer using standard network components and long cable lengths.

#### ■ Intellifind

Geometric pattern match tool for robust pattern location and pattern recognition in noisy images; includes rotation and scale measurement.

### Available Hardware:

- Vision MINI
- Vision HAWK
- Vision HAWK C-Mount
- GigE Camera

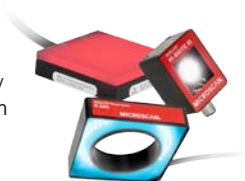
### Capabilities:

- All AutoVISION tools
- Image transformation and scaling
- Precision calibration
- Custom vision tools (scripting)

### Lighting and Accessories

#### ■ NERLITE® Lighting

Lighting and imaging systems designed specifically for machine vision, allowing reliable performance in any imaging application.



#### ■ I/O modules

Enable the use of discrete inputs and/or outputs with a PC that has Visionscape installed.



#### ■ Analog VGA and SXGA cameras

#### ■ Standard C-mount lenses, filters, and spacers

#### ■ Cables, mounting hardware, power supplies, and calibration targets

## Vision MINI: Smart Camera Vision System

- Smallest fully integrated smart camera ideal for implementing robust inspection in tight spaces. High resolution and color models available.

**Benefits: Fully integrated with lens and lighting, autofocus, ultra compact size**



## System Components:

- Vision MINI camera with built-in lens, lighting, USB communication cable, and integrated AutoVISION or Visionscape software

## Vision HAWK: Smart Camera Vision System

- Industrial smart camera features rugged plug-and-play design with liquid lens autofocus and embedded Ethernet.

**Benefits: Fully integrated with lens and lighting, autofocus, IP65/67, built-in I/O, Ethernet, PROFINET**



## System Components:

- Vision HAWK camera with built-in lens, lighting, and integrated AutoVISION or Visionscape software
- Ethernet cable
- Power cable

## Vision HAWK C-Mount: Smart Camera Vision System

- Right angle C-Mount lens configuration allows maximum flexibility in any industrial automation environment.

**Benefits: Interchangeable lenses, IP65/67, built-in I/O, Ethernet, PROFINET**



## System Components:

- Vision HAWK C-Mount camera and integrated AutoVISION or Visionscape software
- C-mount lens and extension tube
- Ethernet cable
- Power cable
- NERLITE lighting

## GigE Cameras: GigE Machine Vision

- Interfaces multiple Gigabit Ethernet cameras from VGA to 8 megapixel resolution, including low cost CMOS and color cameras.

**Benefits: Lower cost, longer cables, smaller footprint, high speed**



## System Components:

- Visionscape software
- Visionscape GigE camera
- C-mount lens and extension tube
- Network components
- NERLITE lighting

# MICROSCAN®

[www.microscan.com](http://www.microscan.com)

**Product Information:** [info@microscan.com](mailto:info@microscan.com) **Technical Support:** [helpdesk@microscan.com](mailto:helpdesk@microscan.com)