



INTEGRA 9505

Installation Guide



26 Dec 2007

Version 3.0.4

No part of this publication may be reproduced or transcribed, stored in a retrieval system, computer or otherwise, in any form or by any means, magnetic, mechanical, electronic, optical, manual, or otherwise, and may not be translated into any language without the express written permission of Label Vision Systems, Inc. (“LVS”).

All LVS publications contain proprietary confidential information of LVS, and possession and use of such proprietary confidential information is subject to restrictions set forth by LVS as described in the applicable non-disclosure agreements and/or license agreements with LVS. Any use of this publication and related materials beyond the terms of said agreements is prohibited, and LVS reserves all rights in this publication and related materials.

The name LVS is a registered trademark of Label Vision Systems, Inc.

Copyright

Copyright © 2007 Label Vision Systems, Inc.
All rights reserved
Printed in the United States of America

How to Contact Us


Label Vision Systems, Inc.
101 Auburn Court
Peachtree City, GA 30269 USA
Voice: +1-770-487-6414
Fax: +1-770-487-0860
Toll Free: +1-800-432-9430
Information: info@lvs-inc.com
Internet: www.lvs-inc.com

Installation Checklist

Before beginning the installation process, it is recommended that you make sure you have the necessary parts required for installation.

All the items listed below were packaged with your order. Items required for installation are noted below. If you are missing any items, contact your Label Vision Systems sales representative.


- INTEGRA 9505 - *Required for installation*
- Installation CD - *Required for installation*
- Power Cord (for United States shipments only) - *Required for installation*
- USB Cable - *Required for installation*
- INTEGRA 9505 Installation Guide (this manual) - *Required for installation*
- Calibration Card
- Power supply
- Two (2) door keys
- Lens cap

 **Important:** Part of the steps in this guide includes installing software for a USB dongle. Note that the USB dongle is built-in to the INTEGRA 9505; it is not a separate device.

Installation

Follow the steps below to install the INTEGRA 9500/9505 software.

IMPORTANT: You **MUST** first install the INTEGRA 9500/9505 software **BEFORE** plugging in the INTEGRA 9505 power cord or USB cable that connects the INTEGRA 9505 and computer.

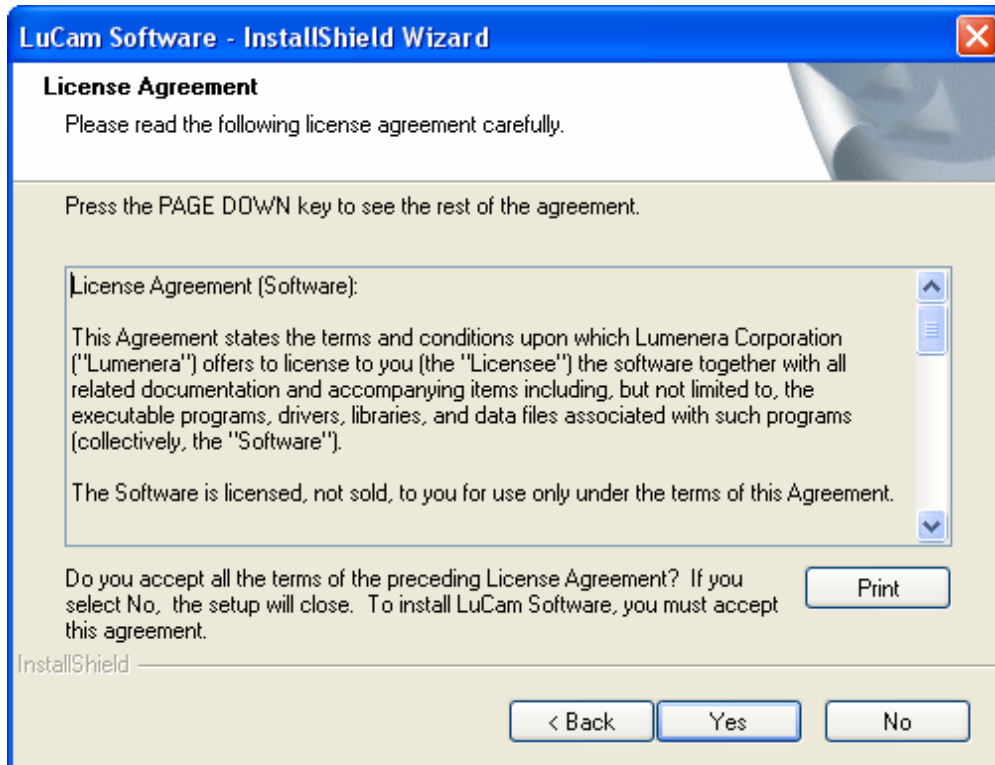
 **Note:** If a USB device fails to load automatically, attempt to manually load the USB device using Device Manager. Consult your Systems Administrator for assistance, if required.



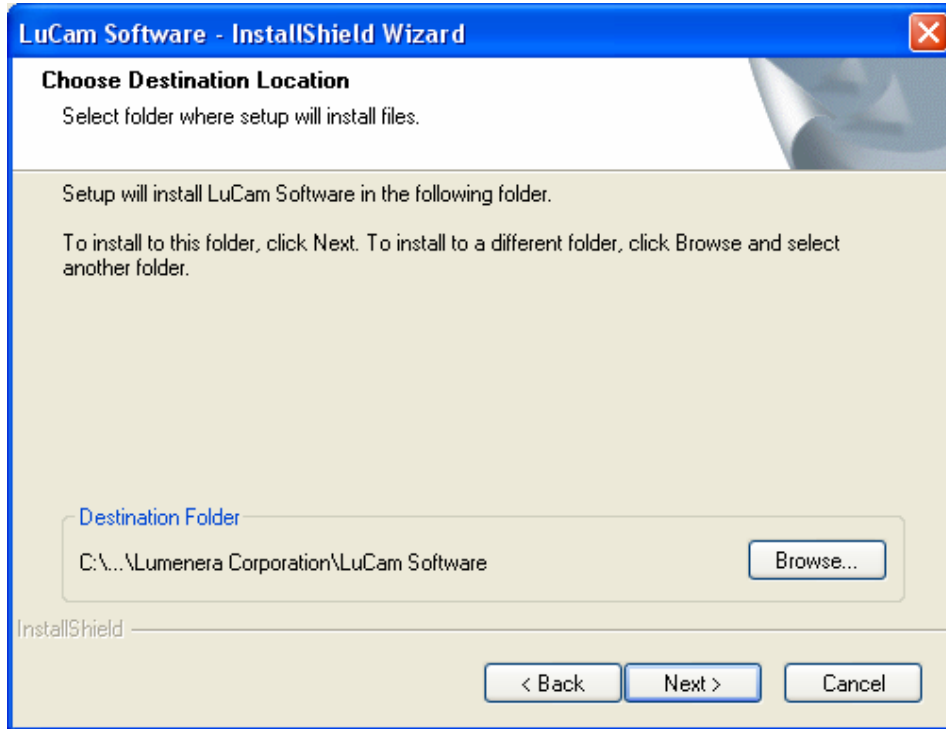
IMPORTANT: The INTEGRA 9500/9505 arrives to your site packaged in a specially designed cardboard shipping carton. **DO NOT** discard this shipping carton in case you must ship or store the system for any reason. Failure to use this carton when returning your product to LVS will void warranty.

Installation Steps

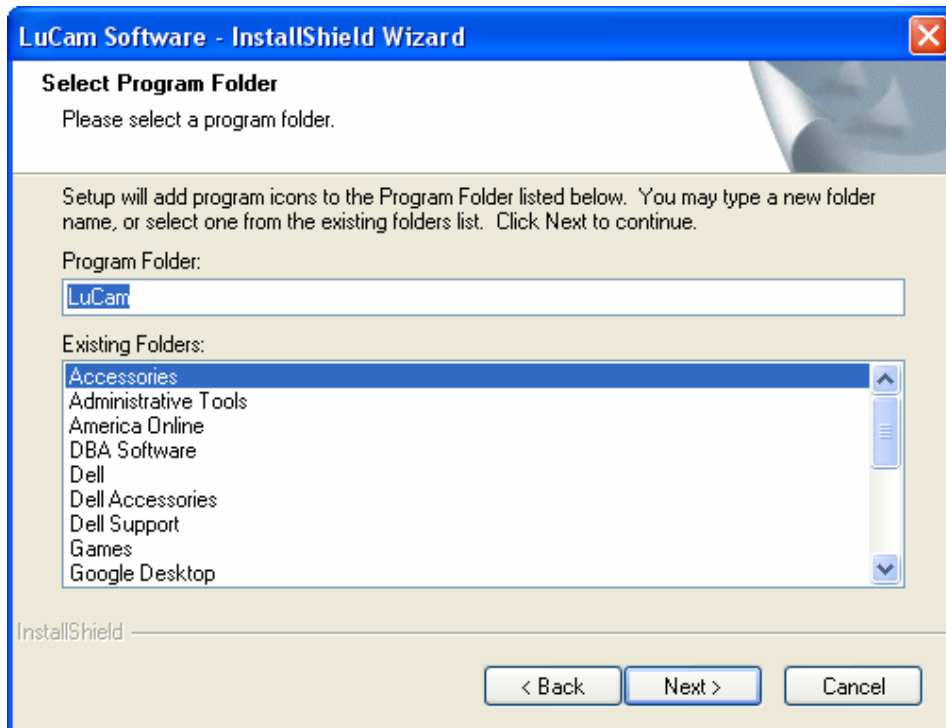
1. Insert the Installation CD into the CD drive.
2. The InstallShield Wizard appears (see below). Click **Yes** to accept the License Agreement.



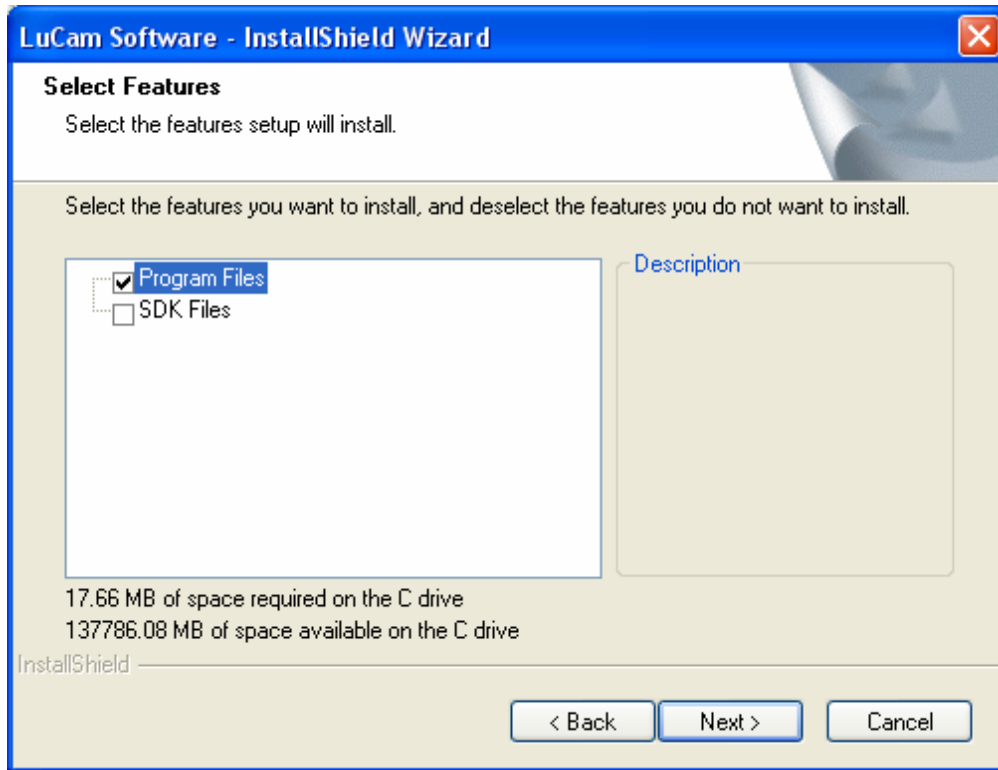
3. The **Choose Destination Location** window appears (see below). Click the **Next** button.



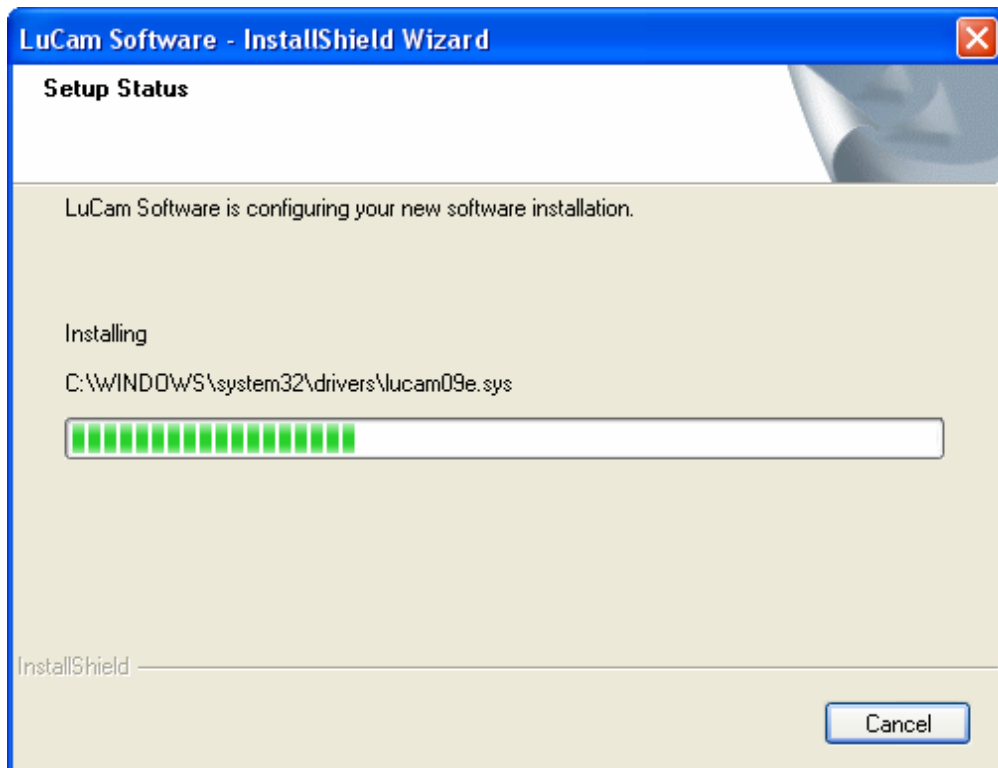
4. The **Select Program Folder** window appears (see below). Click the **Next** button.



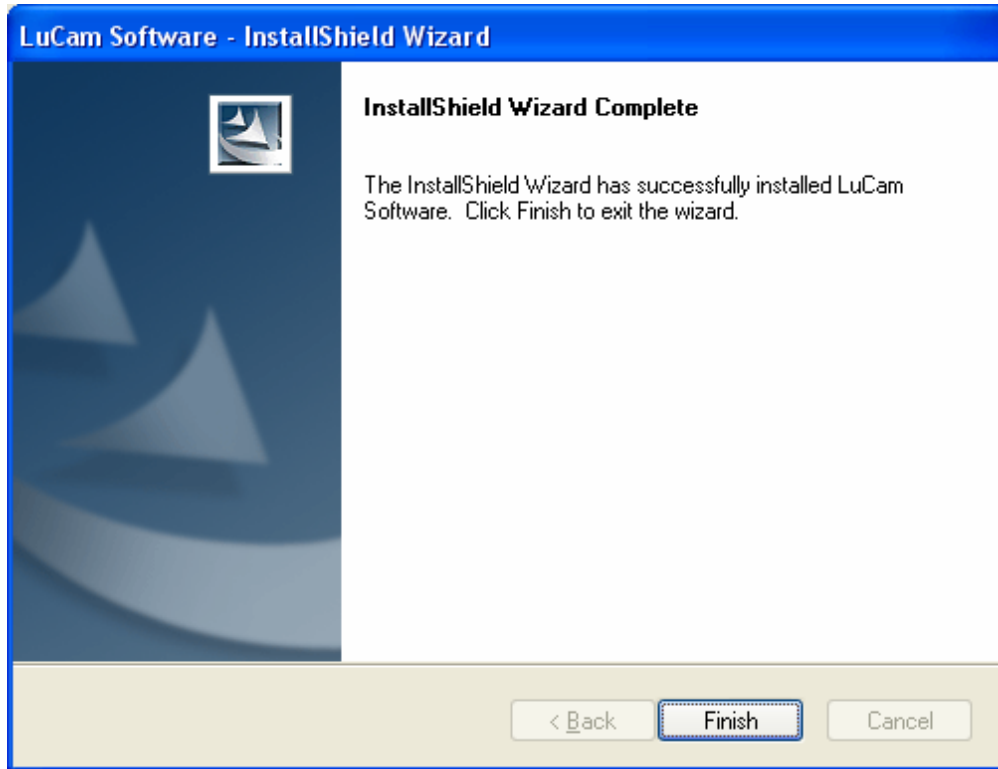
5. The **Select Features** window appears (see below). Click the **Next** button.



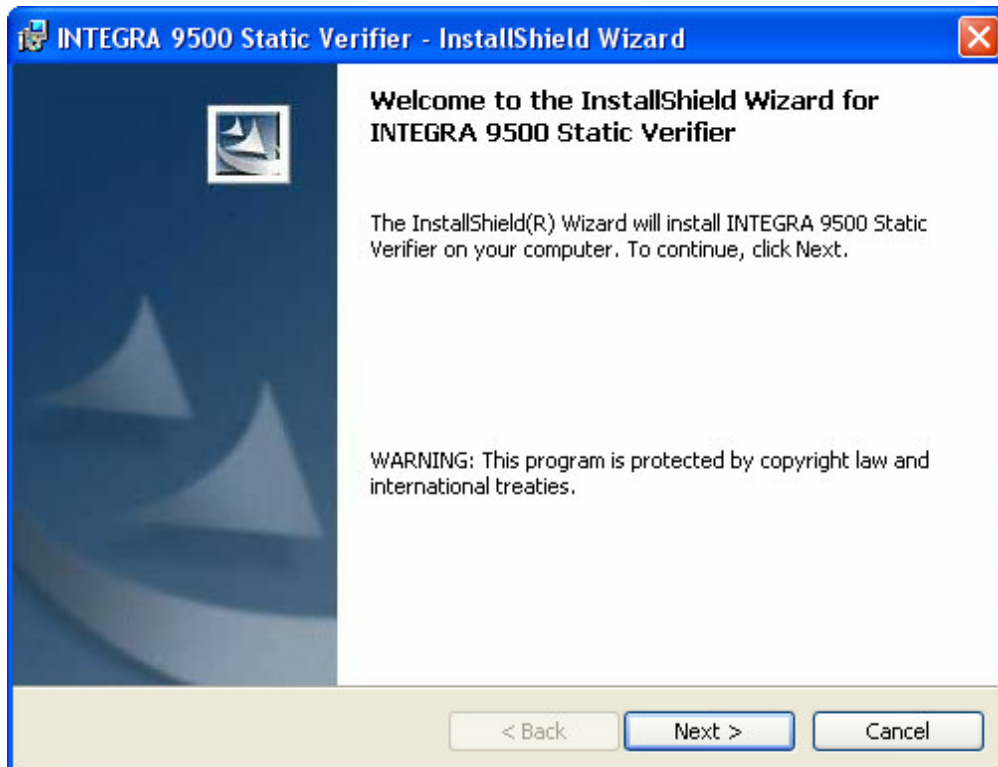
6. The **Setup Status** window appears which indicates the LuCam Software is configuring your new software installation (see below).



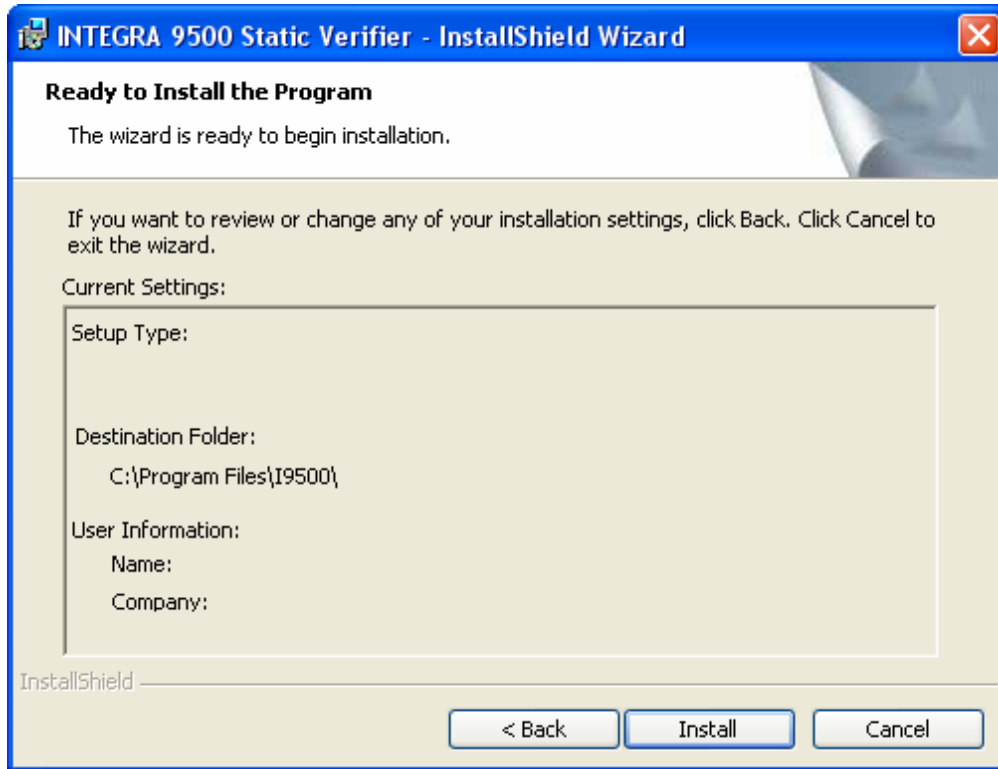
7. The InstallShield Wizard is complete (see below). Click the **Finish** button.



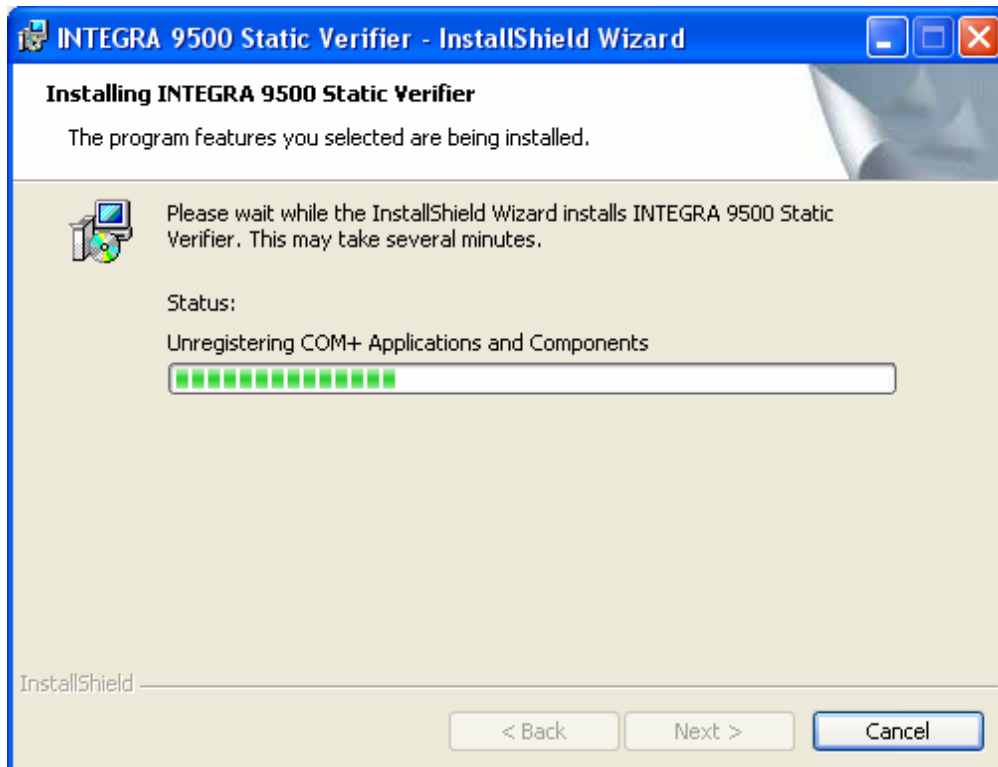
8. The InstallShield Wizard for the INTEGRA 9500 Static Verifier appears (see below). Click the **Next** button.



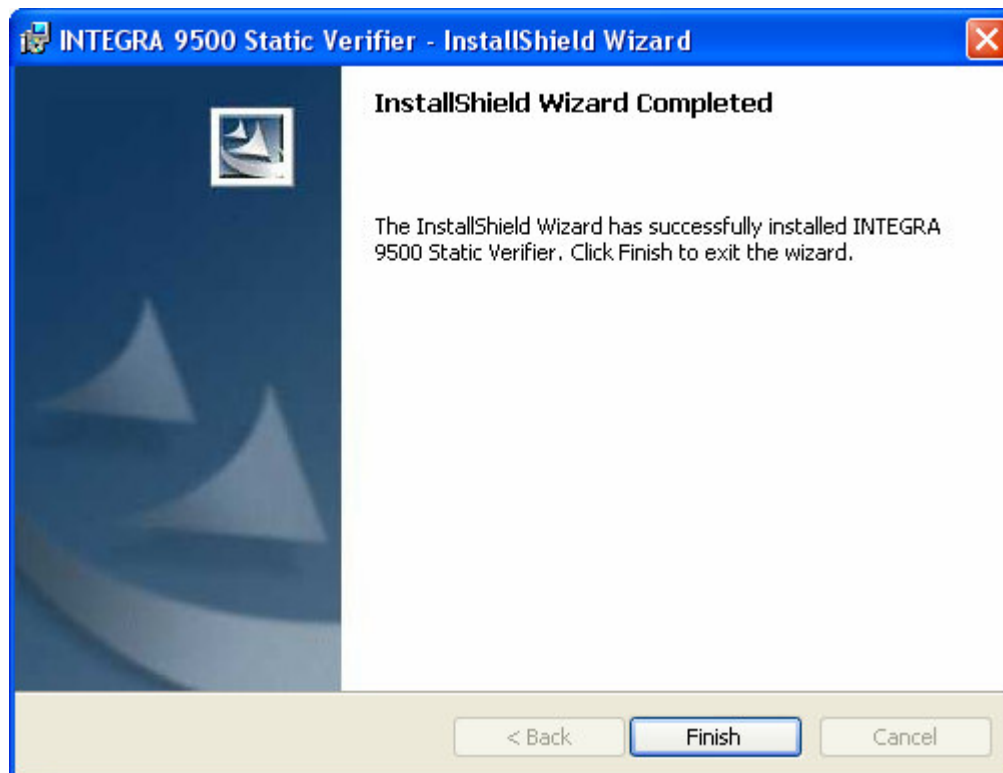
9. The program is ready for installation (see below). Click the **Install** button.



10. The status window appears indicating that the INTEGRA 9500 Static Verifier is being installed (see below).




11. The InstallShield Wizard is complete (see below). Click the **Finish** button.



12. Plug the power cord into the power jack on the back of the INTEGRA 9505.

13. Insert one end of the USB cable into the USB port on the back of the INTEGRA 9505.

 **Note:** The USB port must be USB 2.0 compliant.

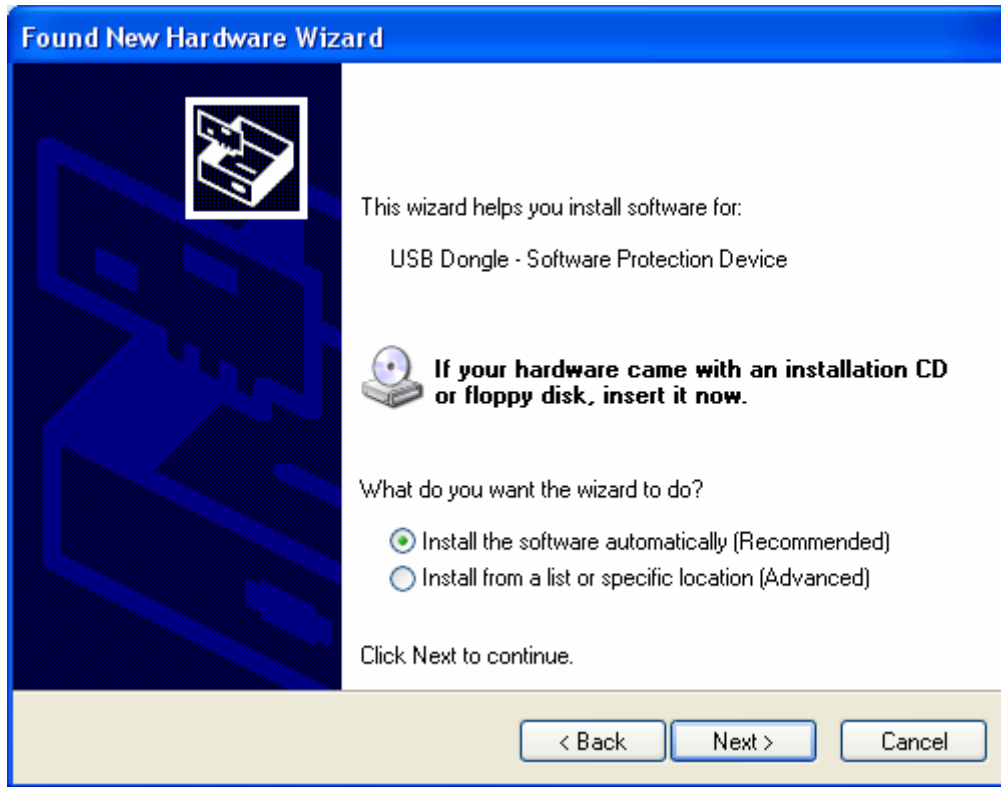
14. Insert the other end of the USB cable into the USB port on your computer.

15. The Found New Hardware Wizard appears (see below). Click **No, not this time**, and then click **Next**.

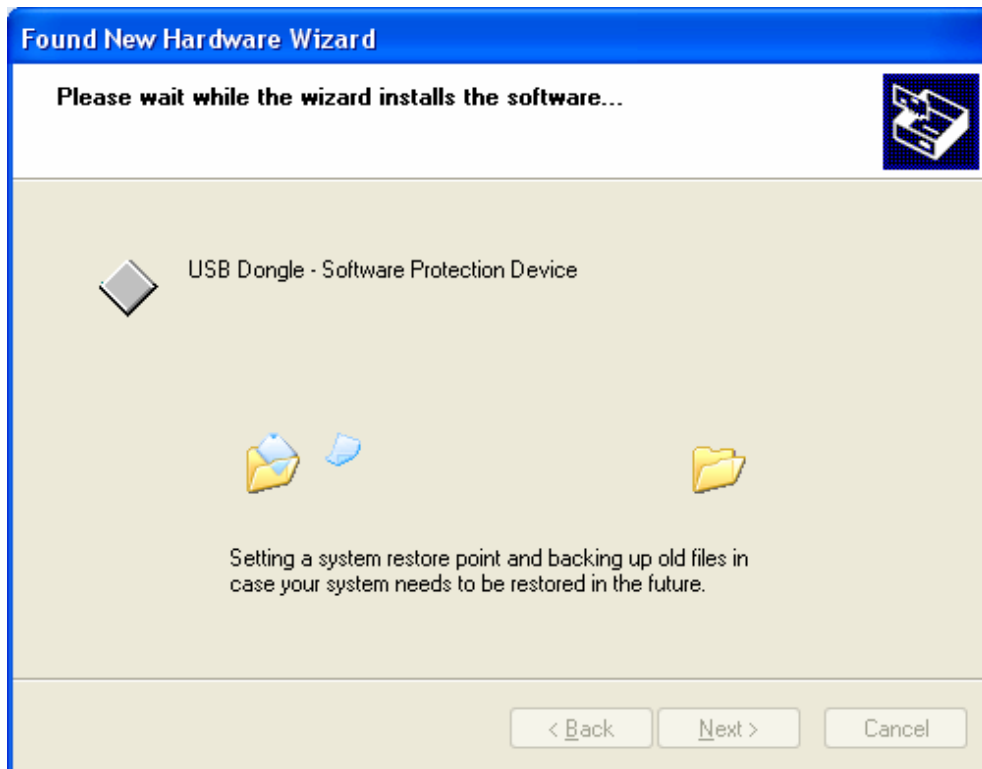


IMPORTANT: Software will be installed for a built-in dongle and a camera. Note that Windows recognizes these devices in any order (i.e. Windows may first recognize the dongle, or it may first recognize the camera). Thus, the sequence of the remaining steps and screenshots may vary.

16. On the following screen (see below), select **Install the software automatically (Recommended)** and then click the **Next** button.



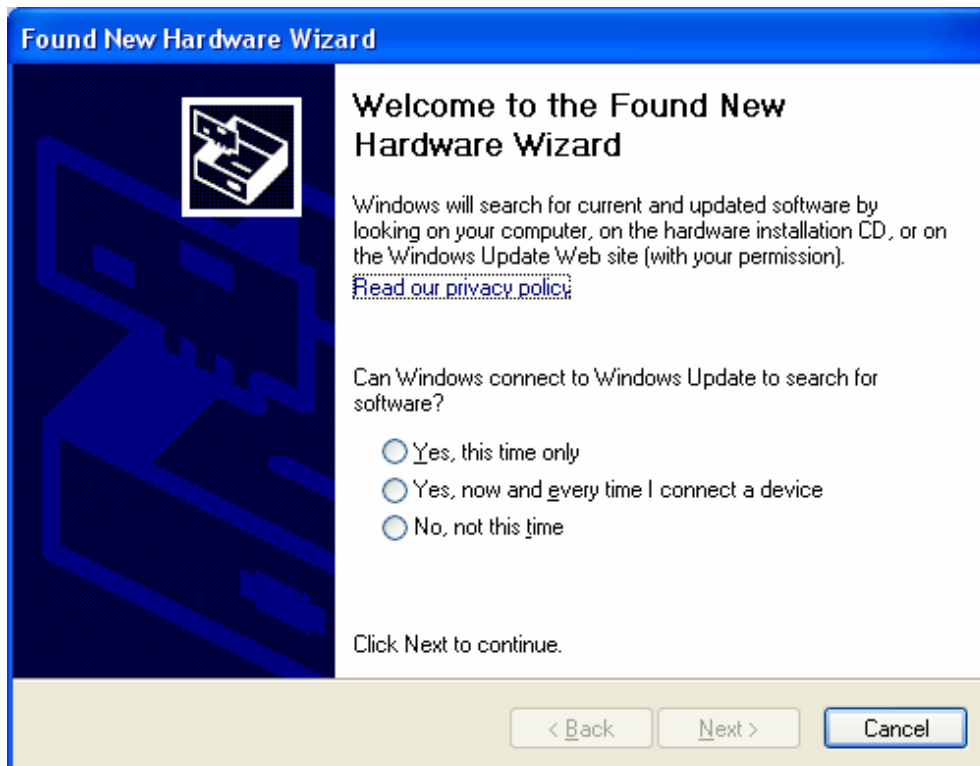
17. The New Hardware Wizard is installing the software (see below).



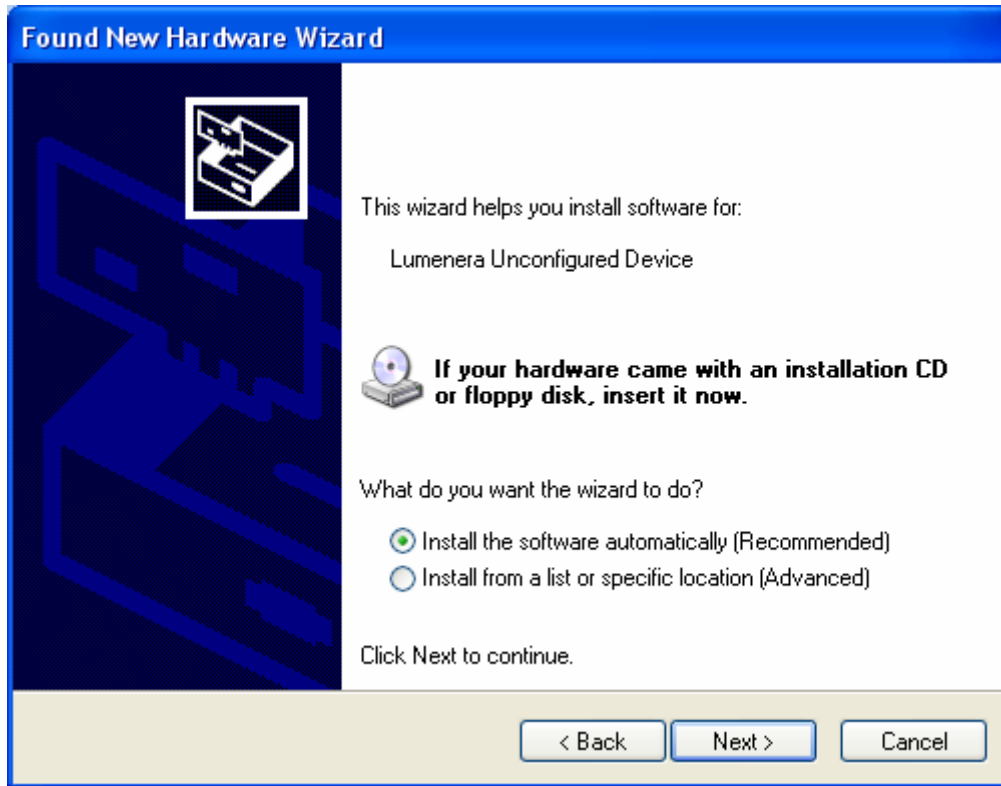
18. Click **Finish** to complete the installation (see below).



19. The Found New Hardware Wizard appears. Click **No, Not this time**, and then click the **Next** button (see below).



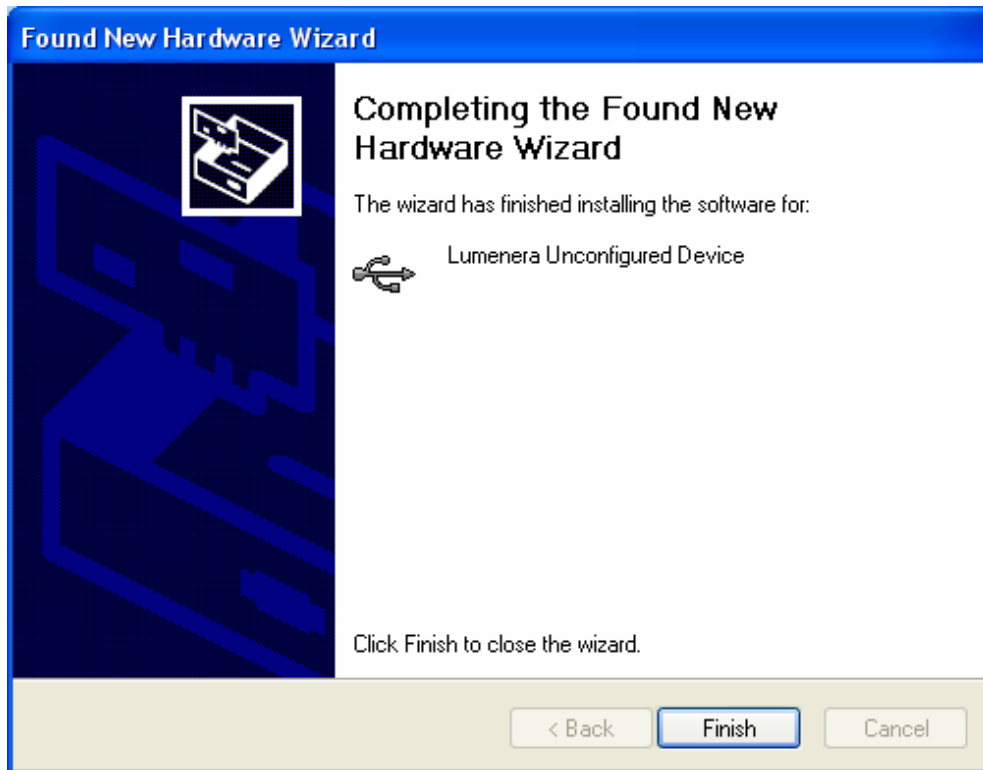
20. Select **Install the software automatically (Recommended)**, and then click the **Next** button (see below).



21. The following message appears. Click **Continue Anyway**.



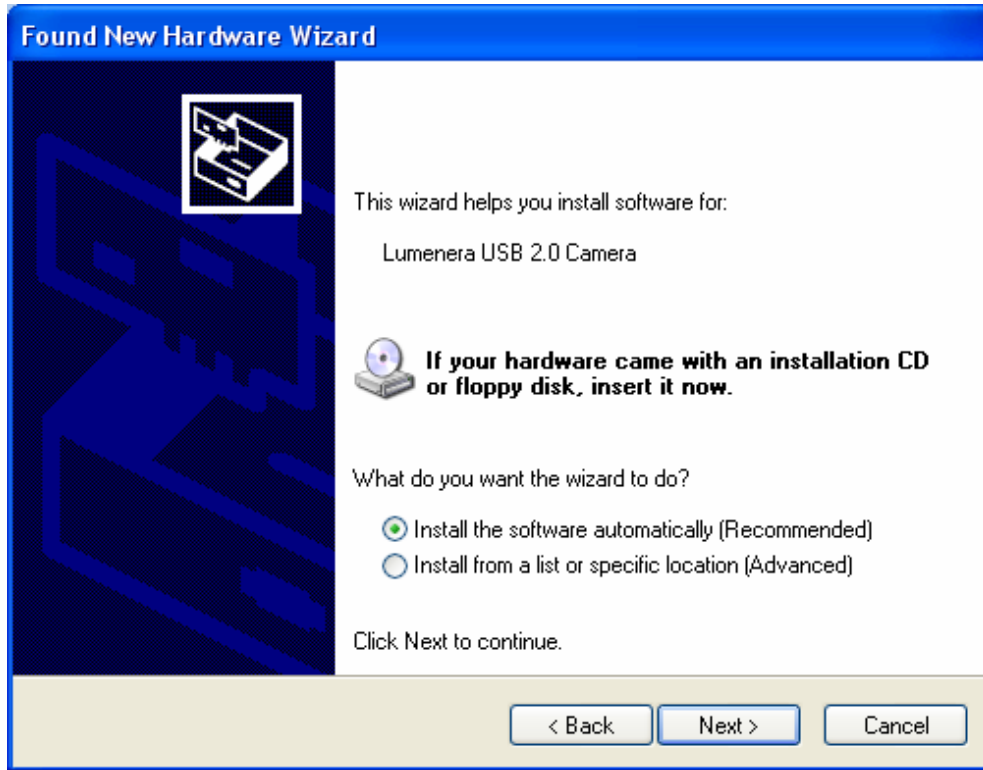
22. The Found New Hardware Wizard is complete (see below). Click the **Finish** button.



23. The Found New Hardware Wizard window appears (see below). Select **No, not this time**, and then click the **Next** button.



24. The following window appears that begins the installation for the Lumenera USB 2.0 Camera (see below). Select **Install the software automatically (Recommended)**, and then click the **Next** button (see below).



25. The following window appears. Click **Continue Anyway**.



26. The installation is complete. Please read the next step.

27. For steps on operating the Integra 9500/9505, refer to the **INTEGRA 9500/9505 Barcode Quality Station Operations Manual** located on the CD shipped with your unit.



It is important for you to read the “Basic Operations” section of the aforementioned manual.

You will discover that when the system is used for the first time, you are prompted for an Operator ID and Password. Use **admin** for the Operator ID and Password.

Important information, like the information mentioned above, is outlined in the INTEGRA 9500/9505 Barcode Quality Station Operations Manual.