

USB-to-Serial Virtual COM Port Driver Installation Guide

(For use with Windows® 7, Vista, XP, and 2000 Operating Systems)

Microscan's USB-to-Serial Virtual COM Port Driver allows you to send serial data using a USB reader.

Installing the USB-to-Serial Virtual COM Port Driver

1. Download the driver files from the Microscan website or Microscan Tools CD.
If the driver files are in a .zip file, extract them to a folder of your choice before running the installer. When the files are extracted, they will be in a folder called "vendor".
2. Connect the USB MINI or MS-4 to your PC. Be sure the reader is recognized and available as a USB device before proceeding.
3. Open the "vendor" folder. You will see the subfolders and files shown below. Double-click on **Install_Driver.cmd** to launch the Microscan USB-to-Serial Virtual COM Port Driver Installer.

amd64

ia64

x86

ReadMe.pdf

Install_Driver.cmd

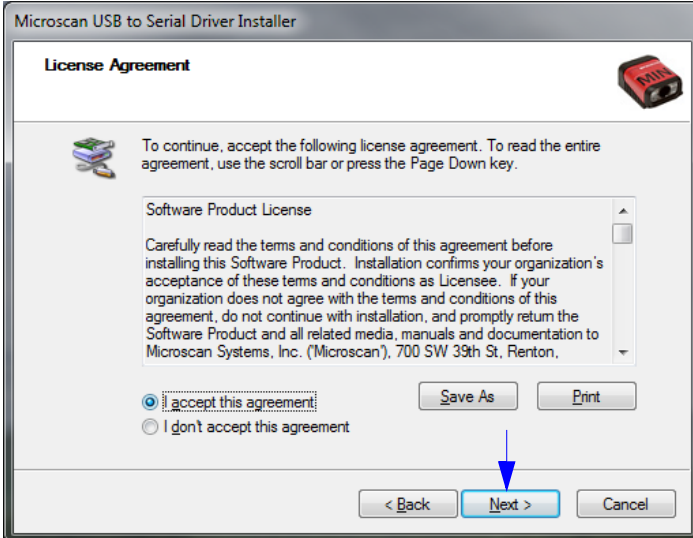
Select **Install_Driver.cmd**
to launch the driver installer.

4. Click **Next** on the driver installer's welcome screen.



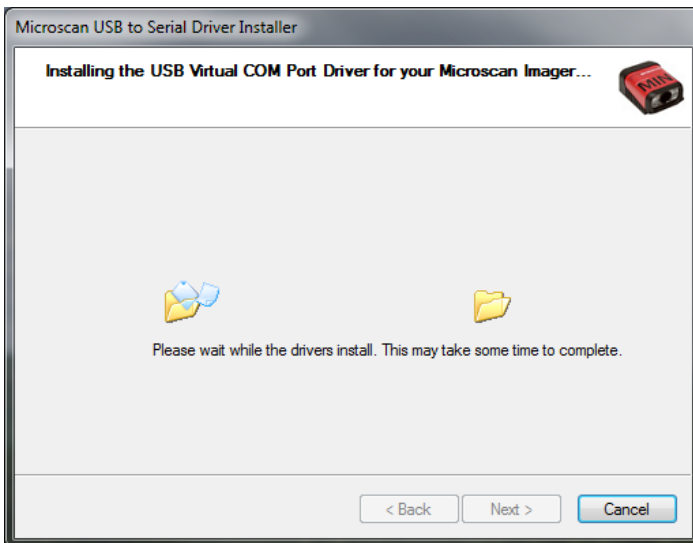
USB-to-Serial Virtual Com Port Driver Installation Guide

5. Read the **License Agreement** shown below. If you accept the terms of the agreement, click the radio button next to the statement “I accept this agreement”, and click **Next**.

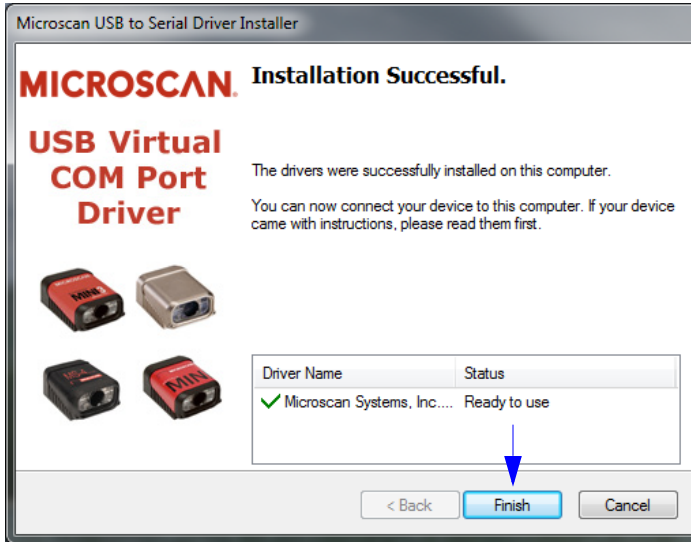


Important: After accepting the license agreement and clicking **Next**, you may see a Windows Security warning that states “Windows can't verify the publisher of this driver software”. If you receive this warning, choose the “Install this driver software anyway” option.

6. The driver files will begin installing. This may take several seconds. Do not interfere with the installer during this process.

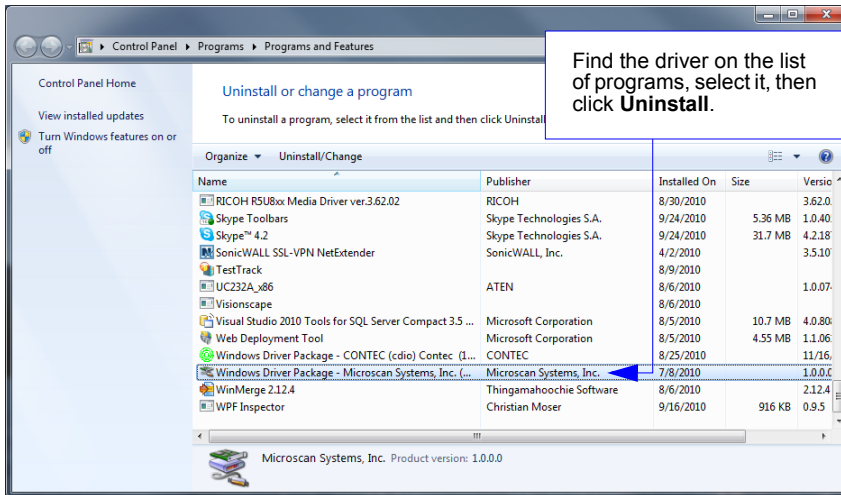


7. Once the driver is installed successfully, you will receive the message shown below. Click **Finish**.



Uninstalling the USB-to-Serial Virtual COM Port Driver

Important: You must uninstall the USB-to-Serial Virtual COM Port Driver any time you require high-speed USB connectivity (to upload images using **EZ Trax**, for example).

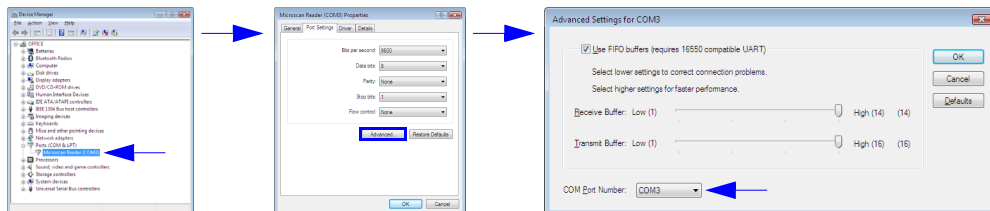


To use the Virtual COM Port again, follow the steps above to re-install the driver.

Changing the COM Port

Follow these steps to change the reader's COM Port:

1. Right-click on **My Computer** in the Windows **Start** menu and select **Properties**.
2. Select the **Hardware** tab in the **System Properties** dialog and click the **Device Manager** button.
3. Expand the **Ports (COM & LPT)** item on the **Device Manager** menu. Right-click on **Microscan Reader** and select **Properties**.
4. Select the **Port Settings** tab in the **Properties** dialog and click the **Advanced** button.
5. Expand the **COM Port Number** menu on the **Advanced Settings** dialog and select your new COM Port number.



You are now ready to begin using the new COM Port.